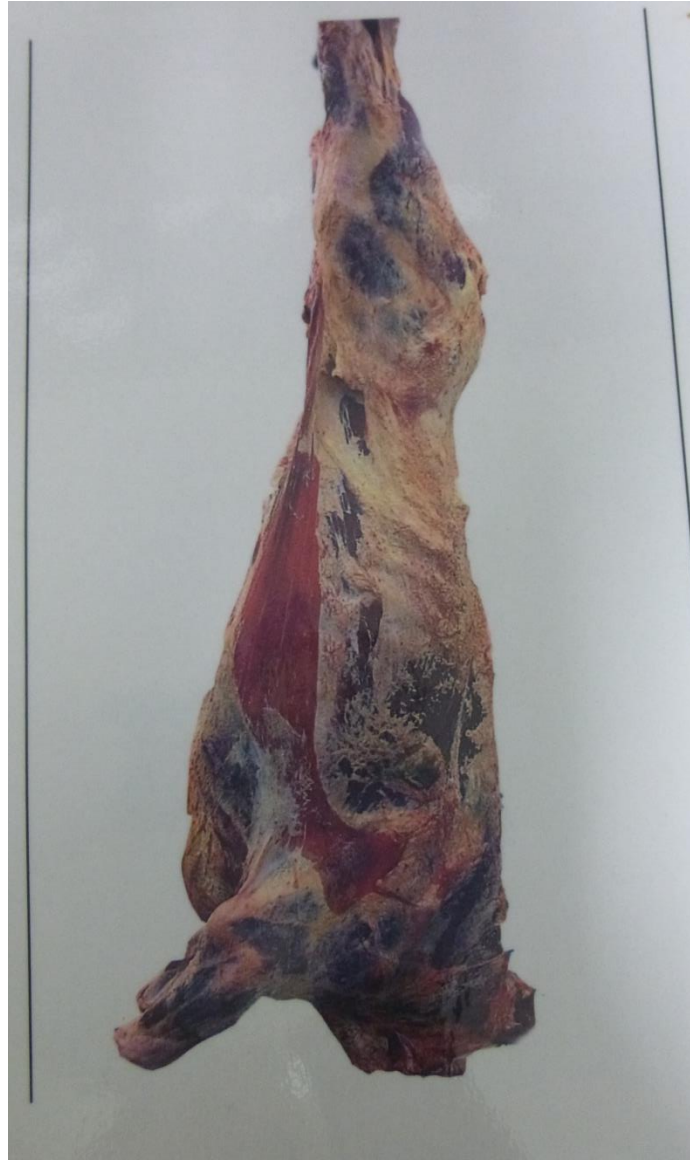


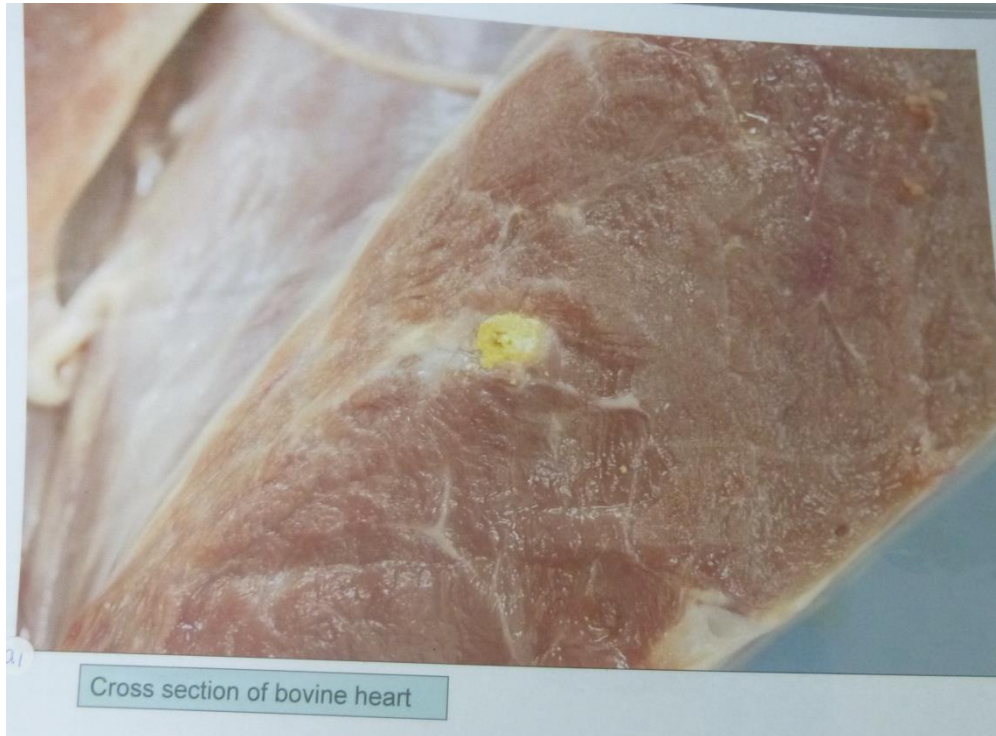
PAPH review

March 8th 2013
Annette Vindenes

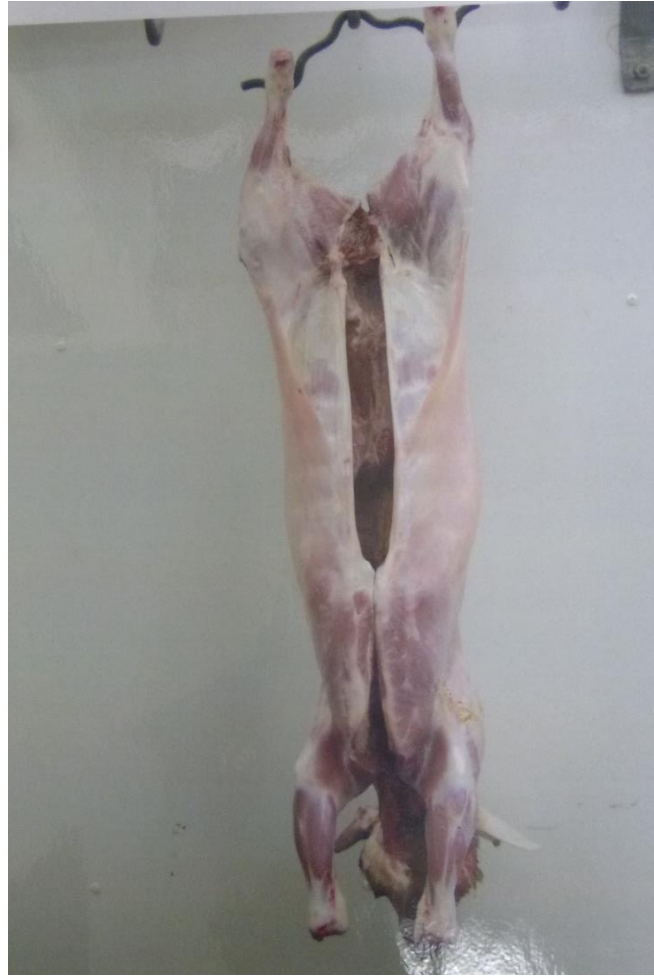
Dark firm dry- septicemia



c. bovis

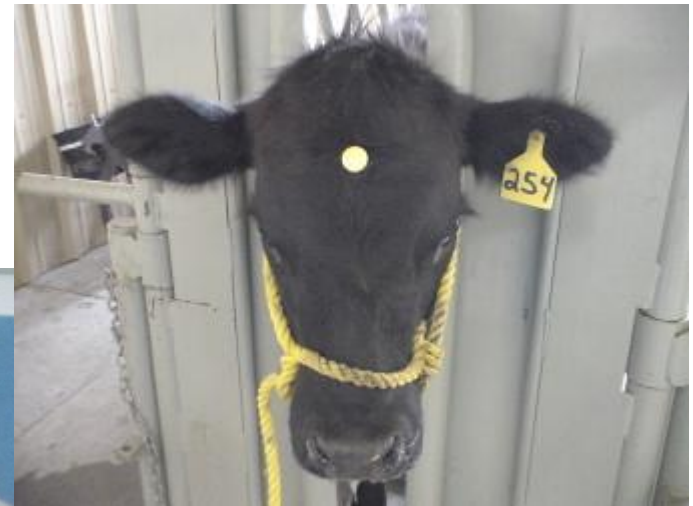
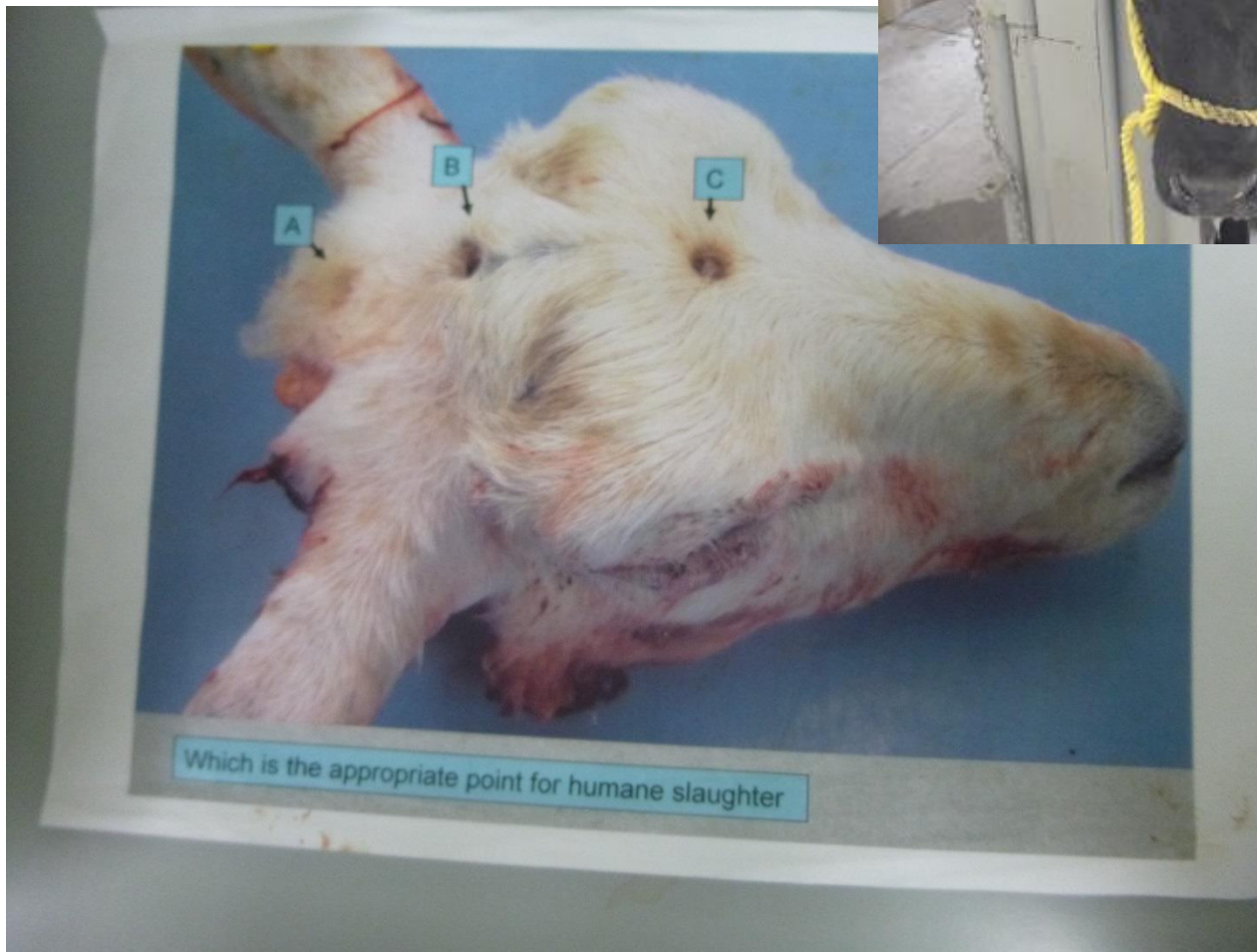


Arthritic stifle



Red neck

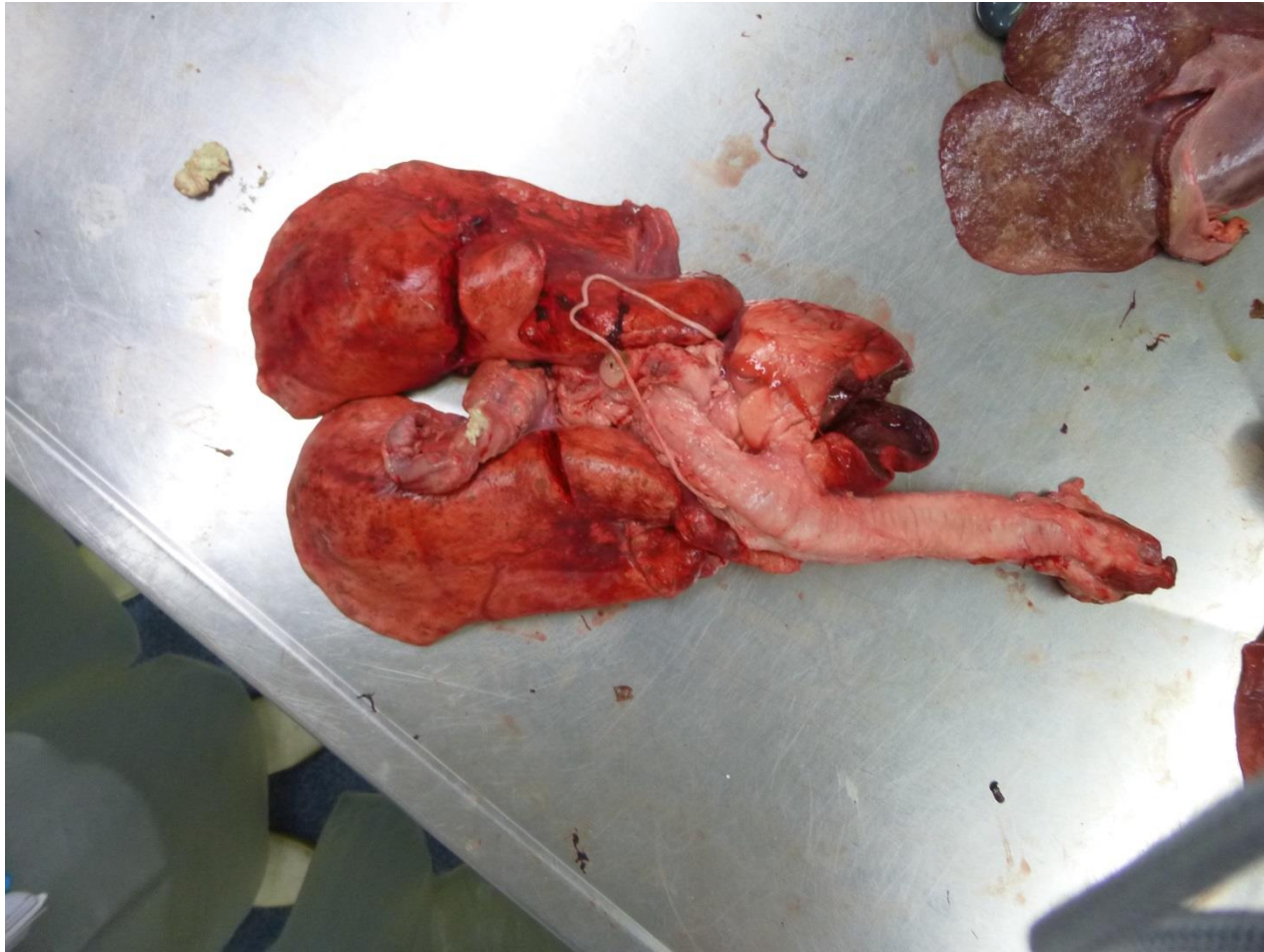




Blood inhalation



Caseous lymphadenitis



Shackle damage



Not plucked properly



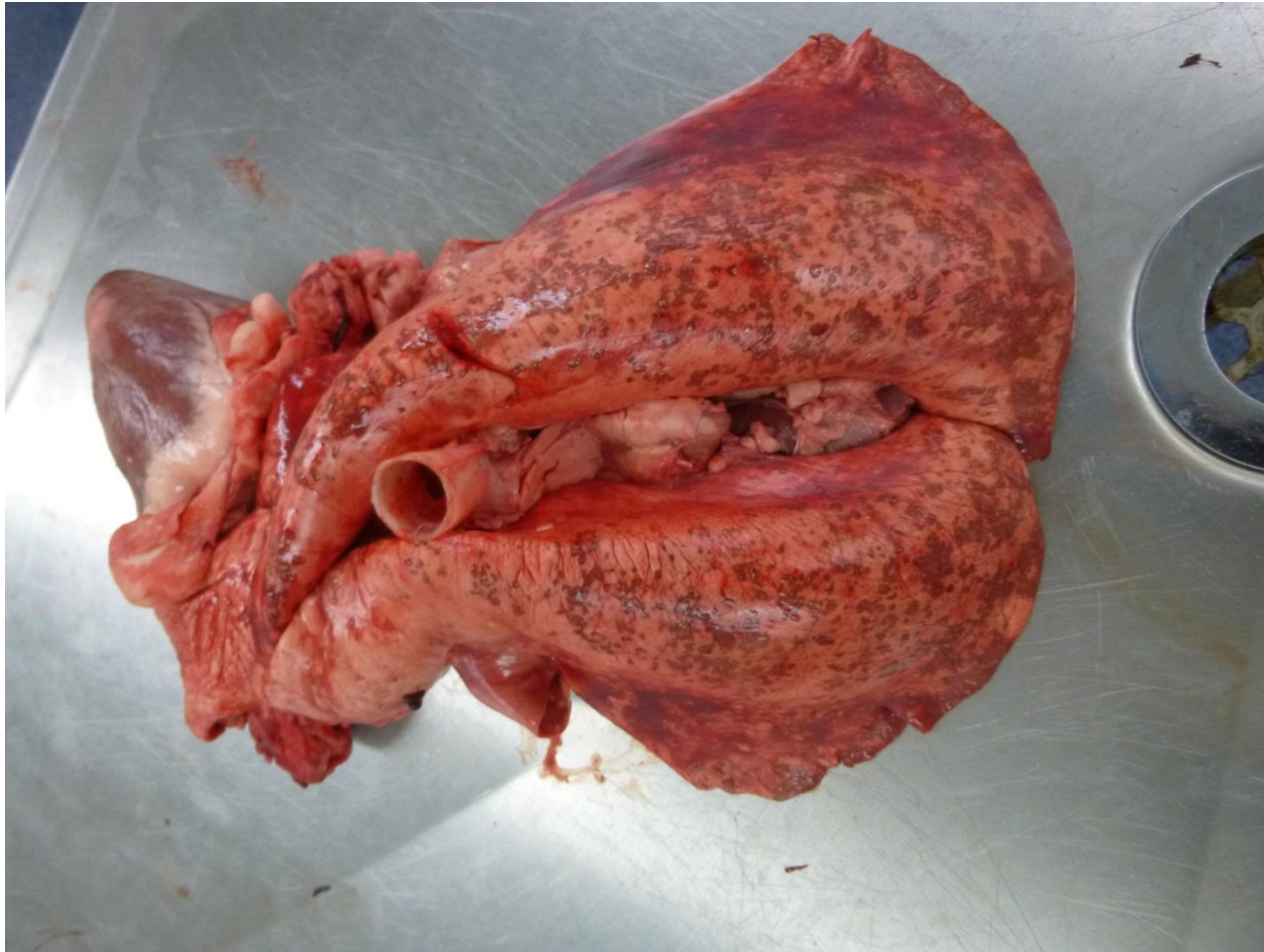
Egg bound



dictyocaulus viviparus



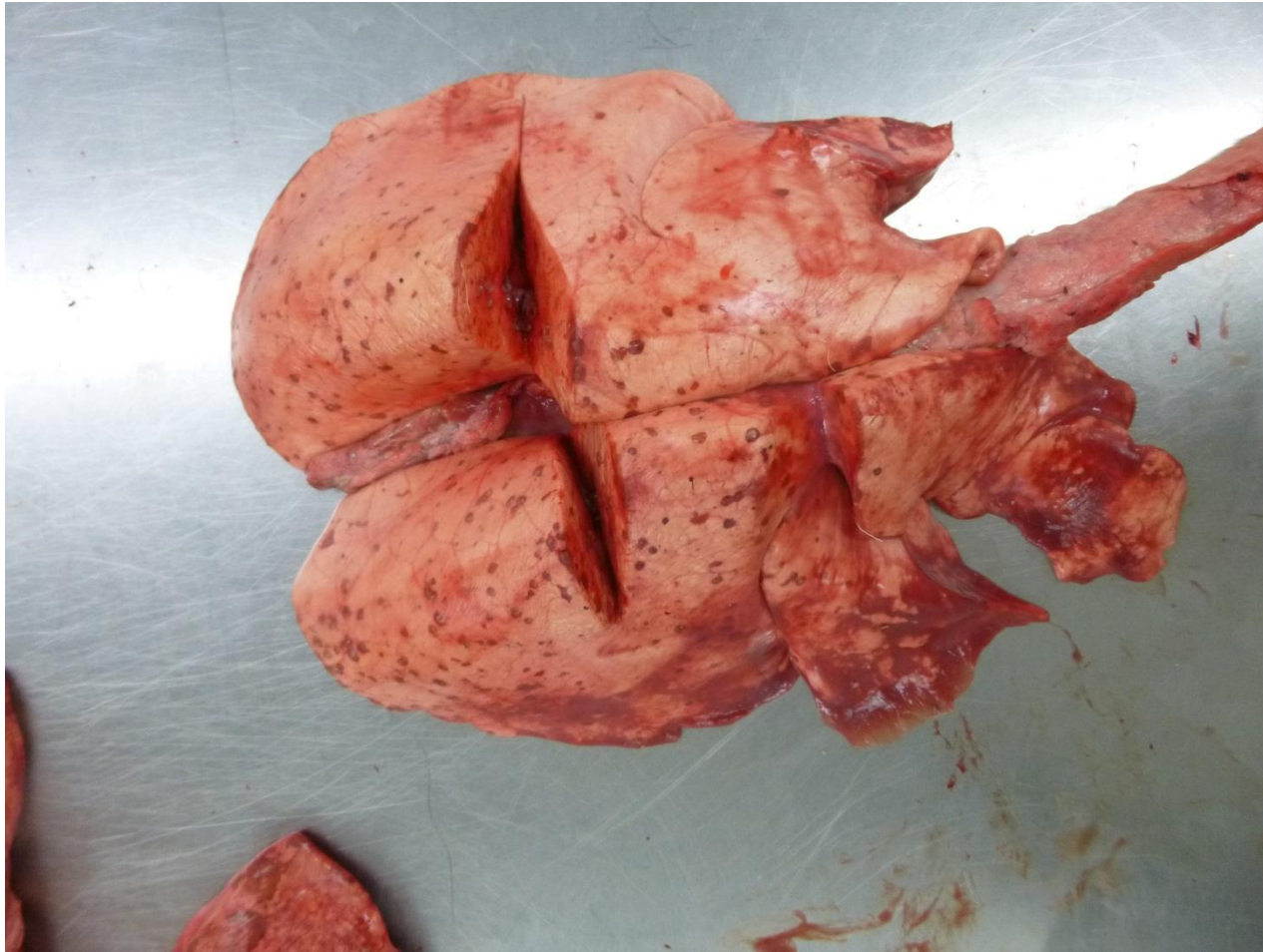
Mulleris capillaris

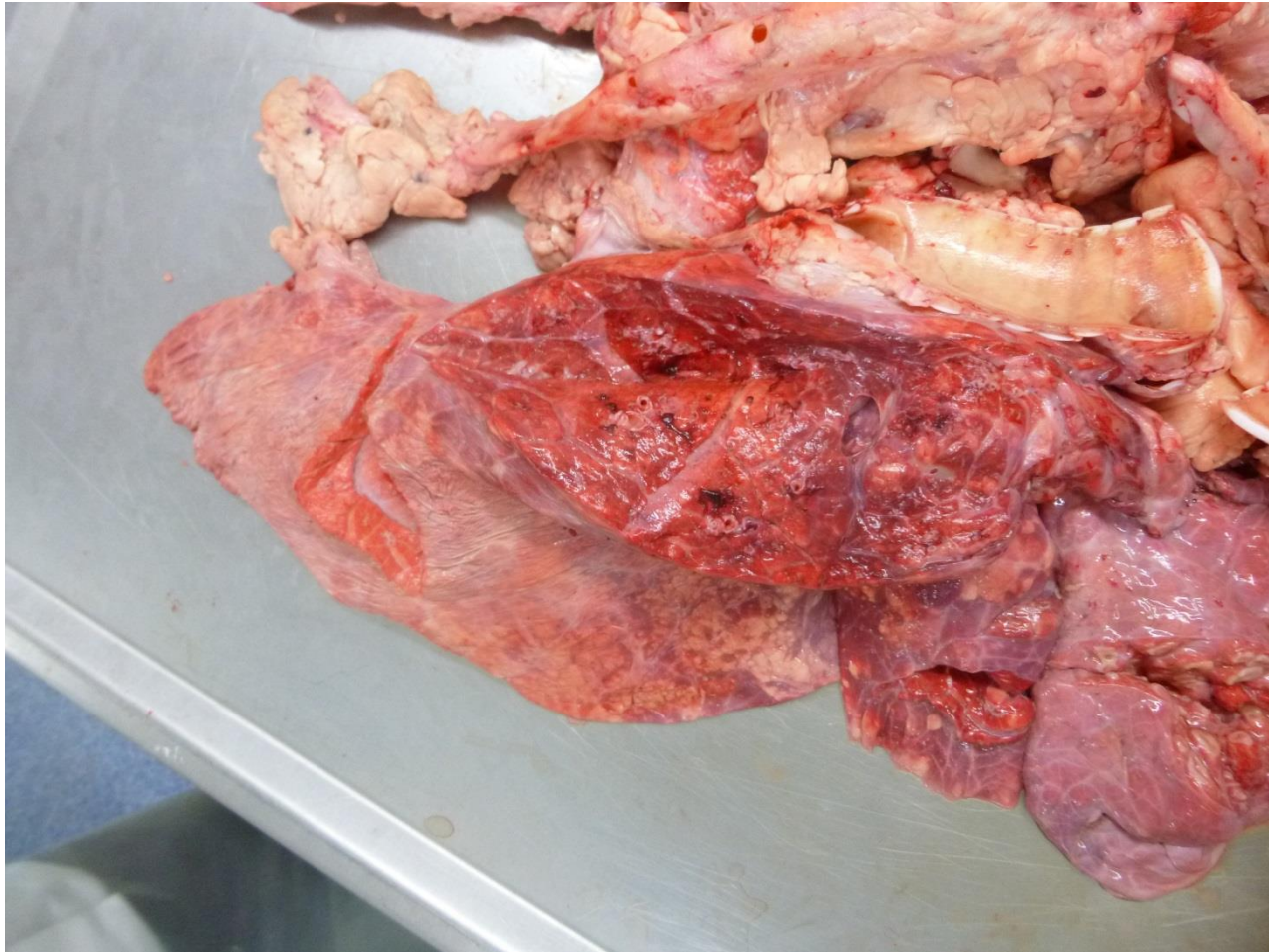


Mulleris non immune

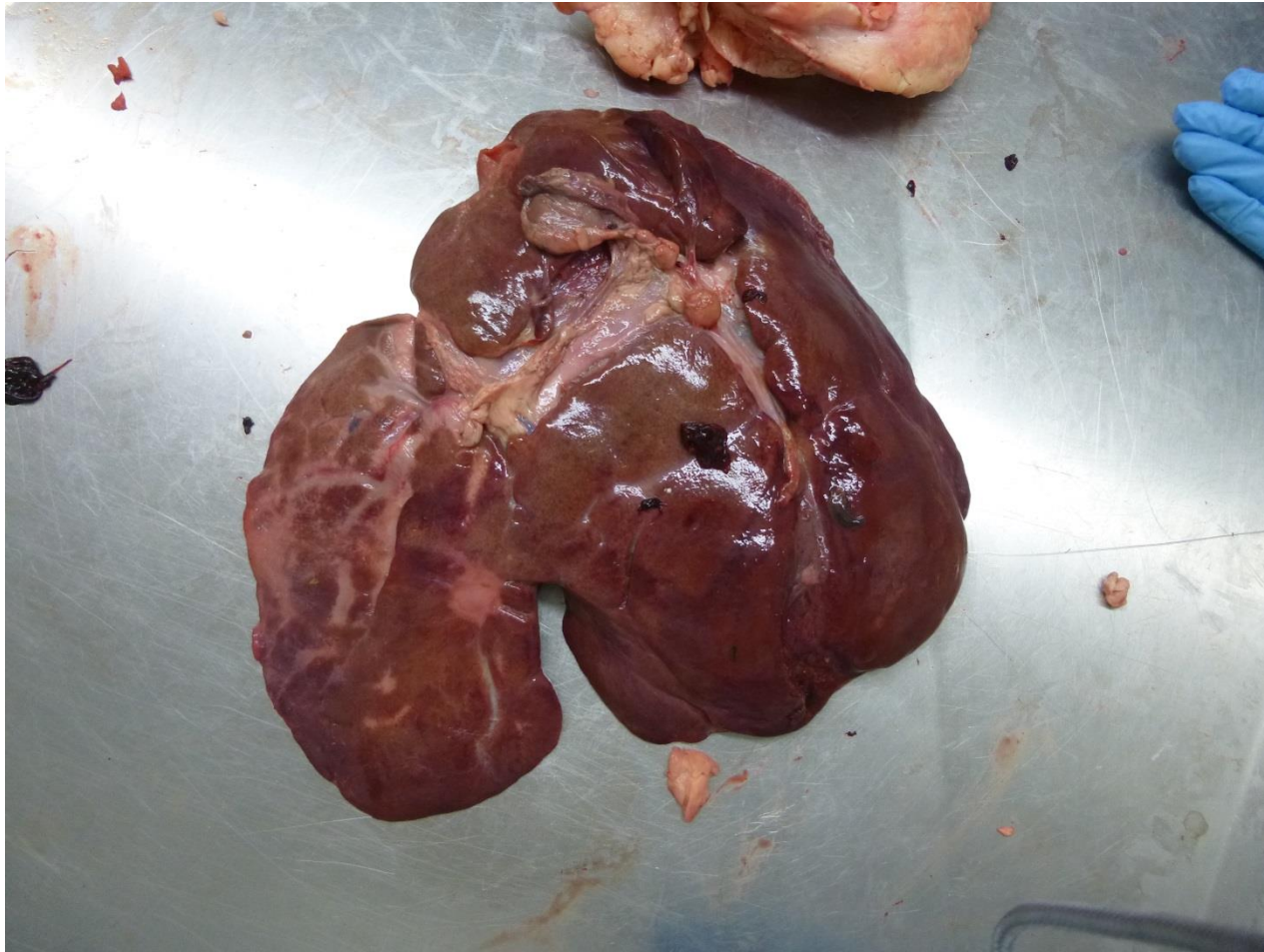


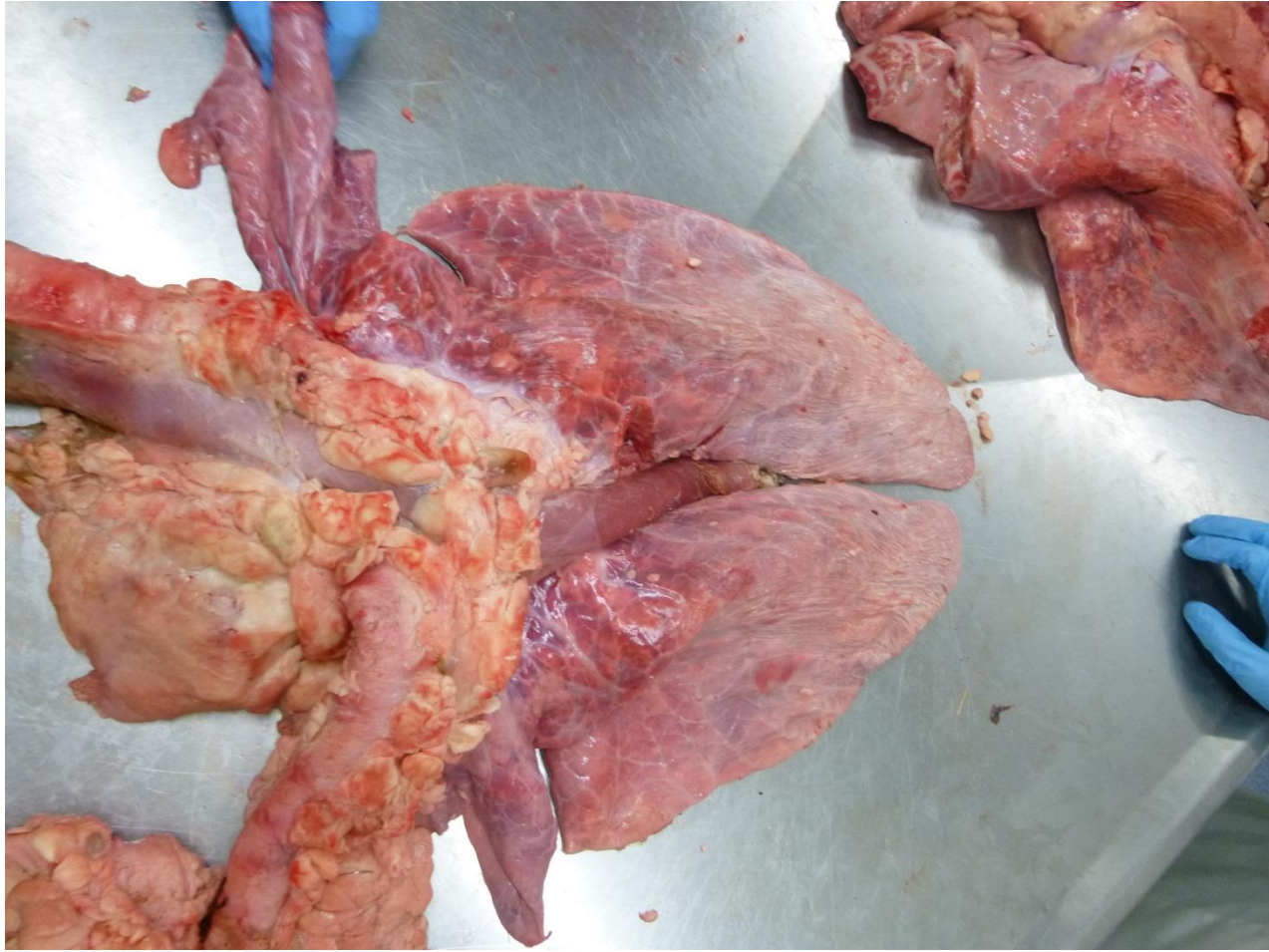
Mulleris immune





Sheep liver fluke





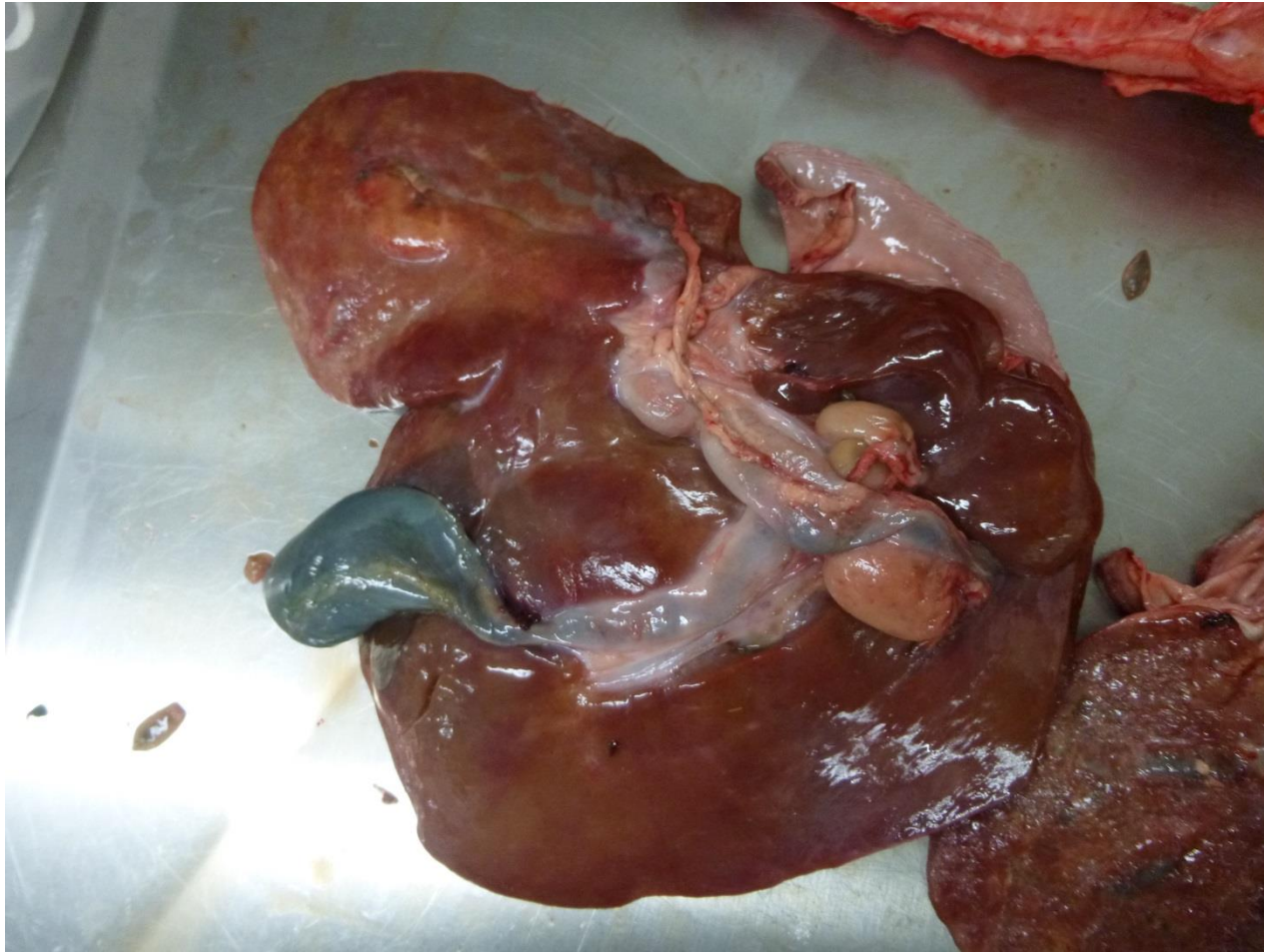
Contamination Cat 2



Chronic flunke liver



Fluke category 3



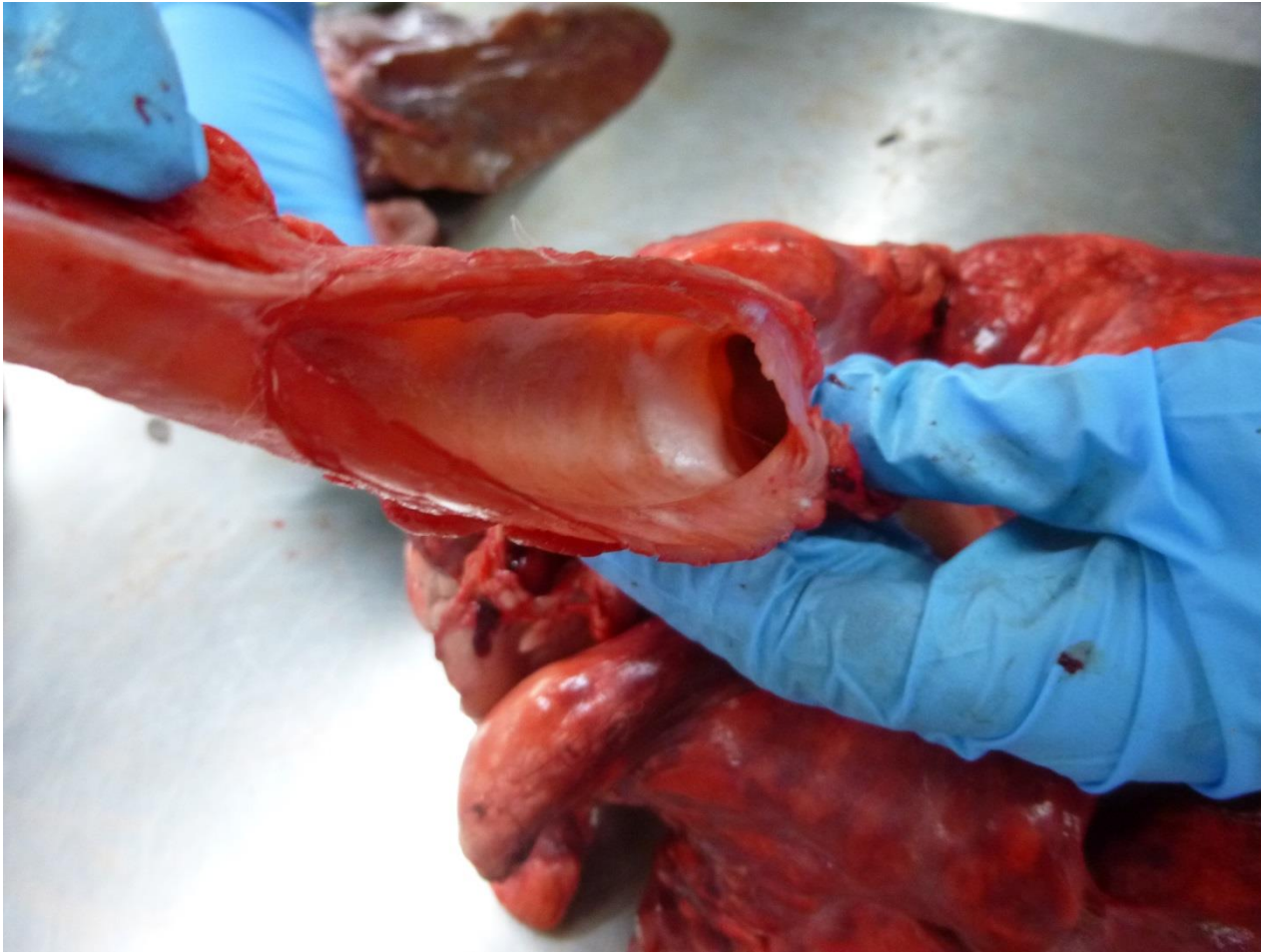
Chronic fluke liver

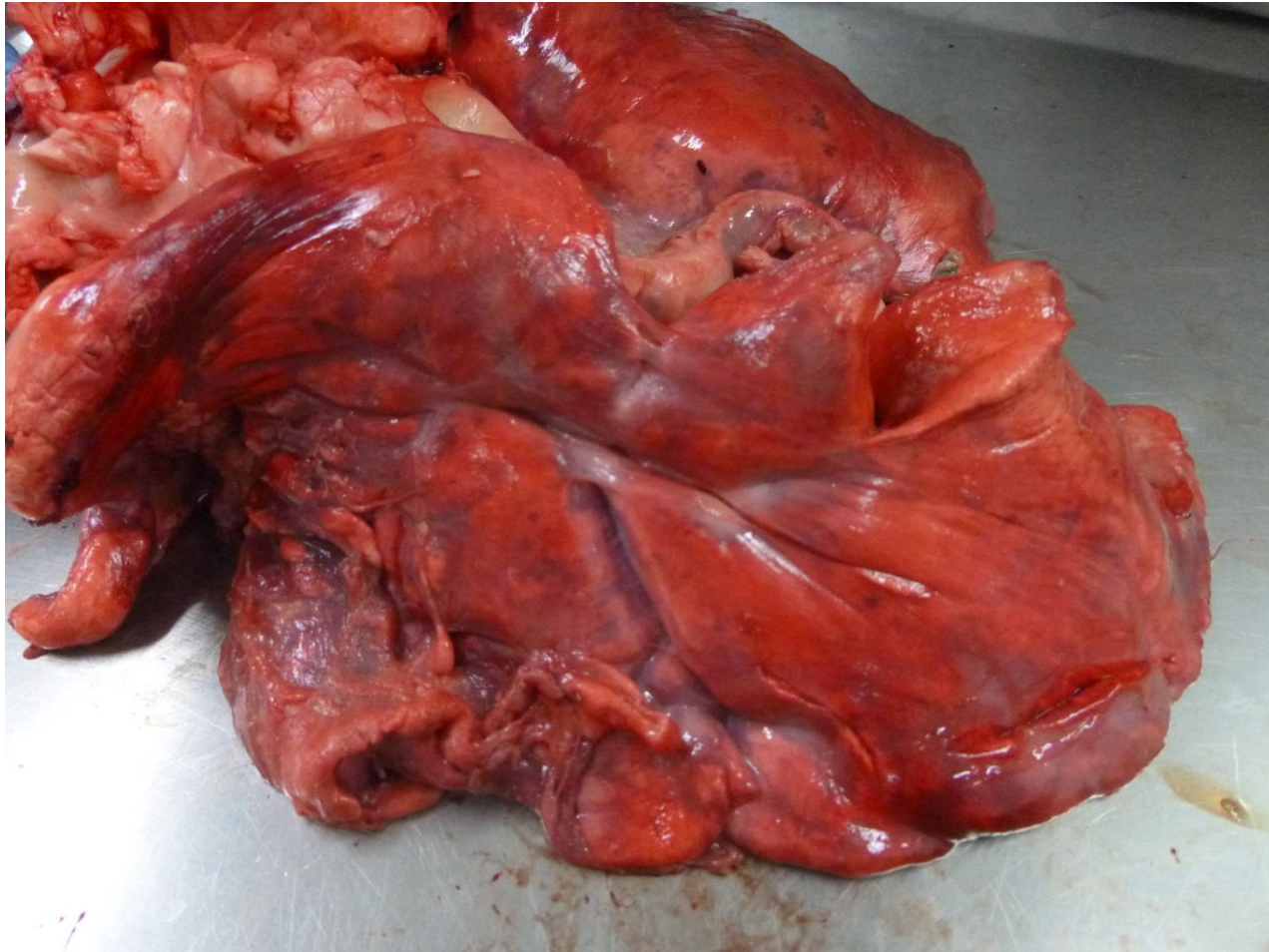


Fluke liver

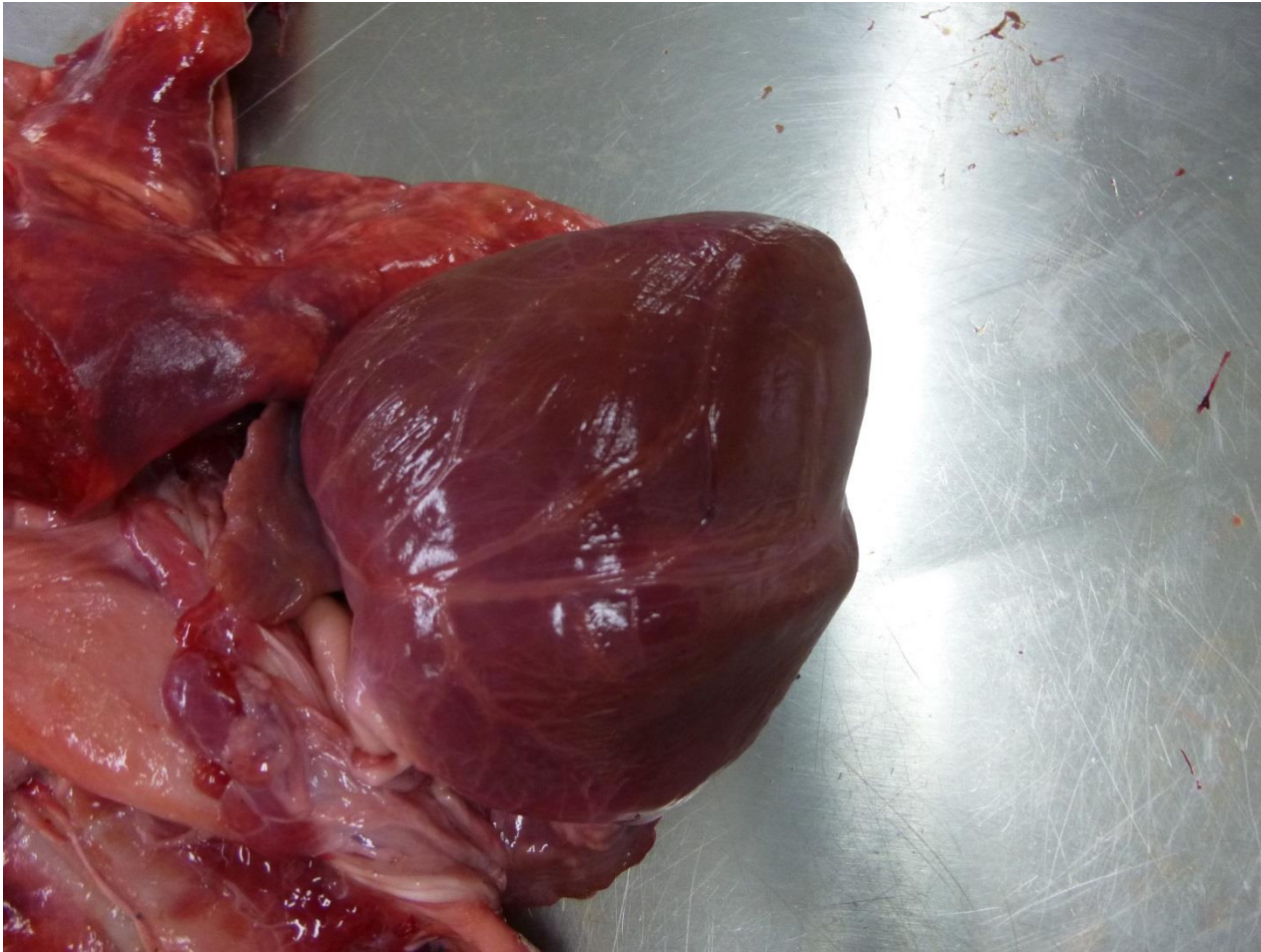


Jaagsiekte cat 2





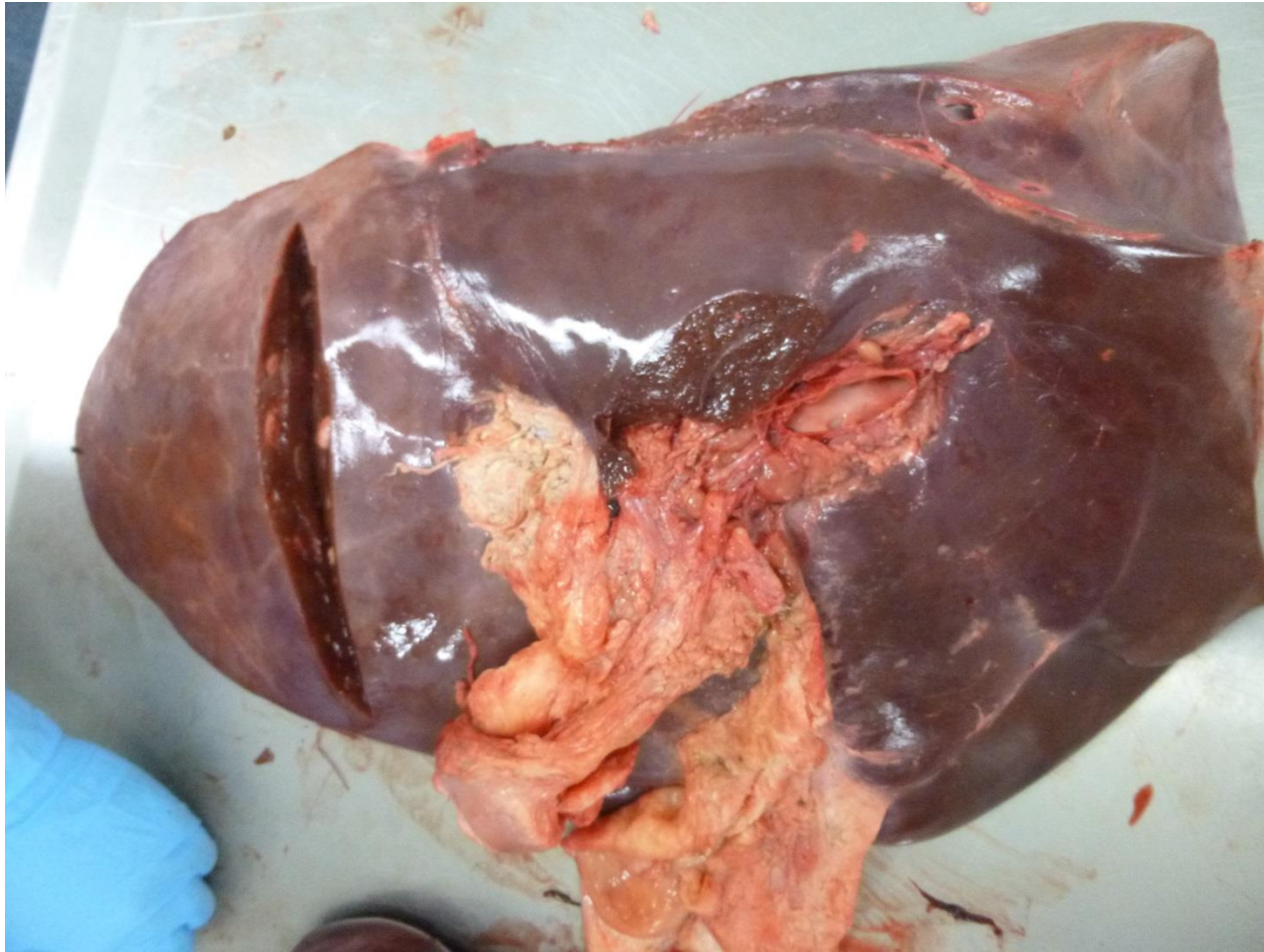
Emaciated heart



Bumble foot



Fluke bovine liver



Pipe stemming fluke



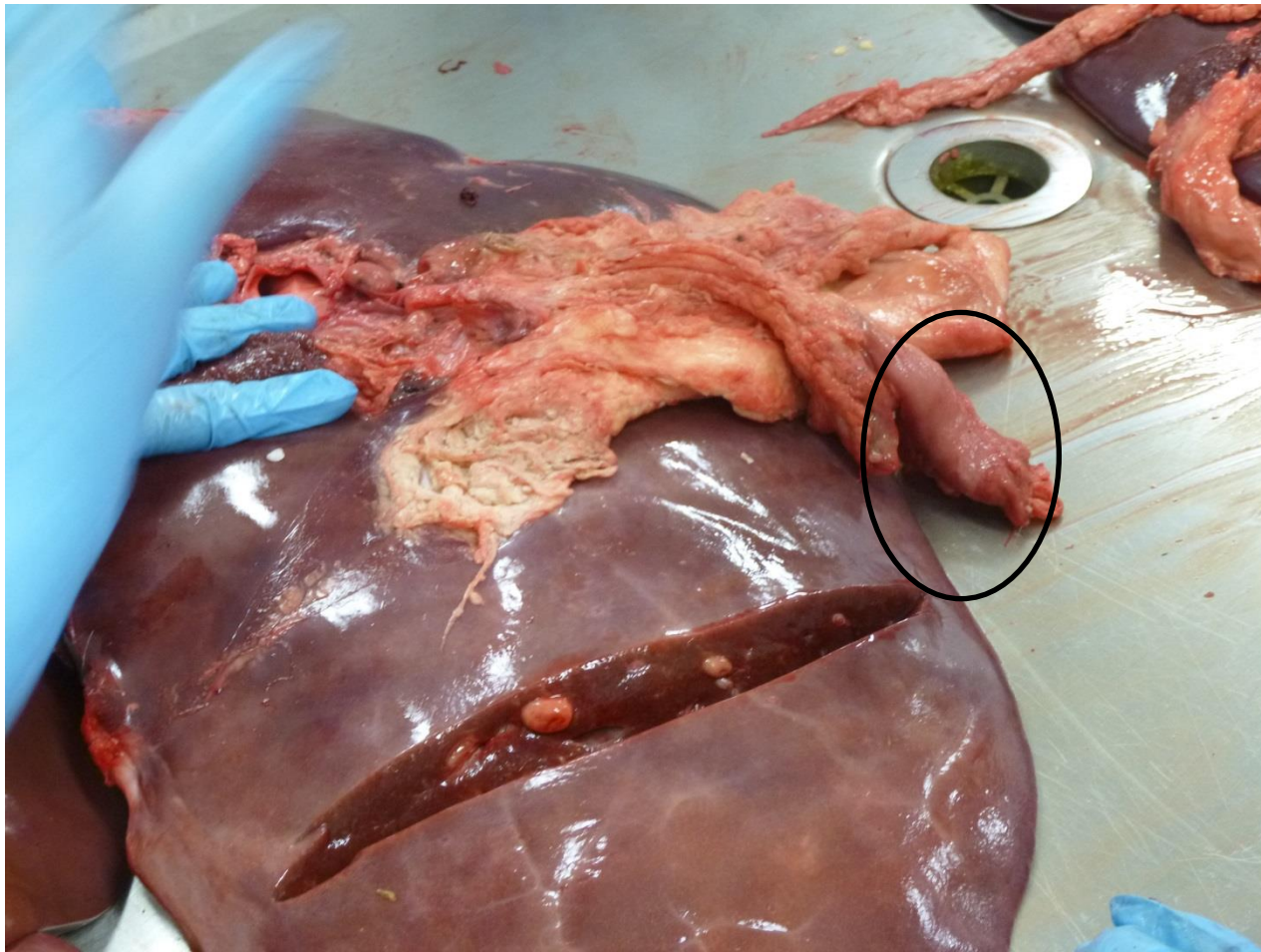
Fibrosed bovine liver fluke



Abscess bovine liver



Intestine attached and fluke = cat 1



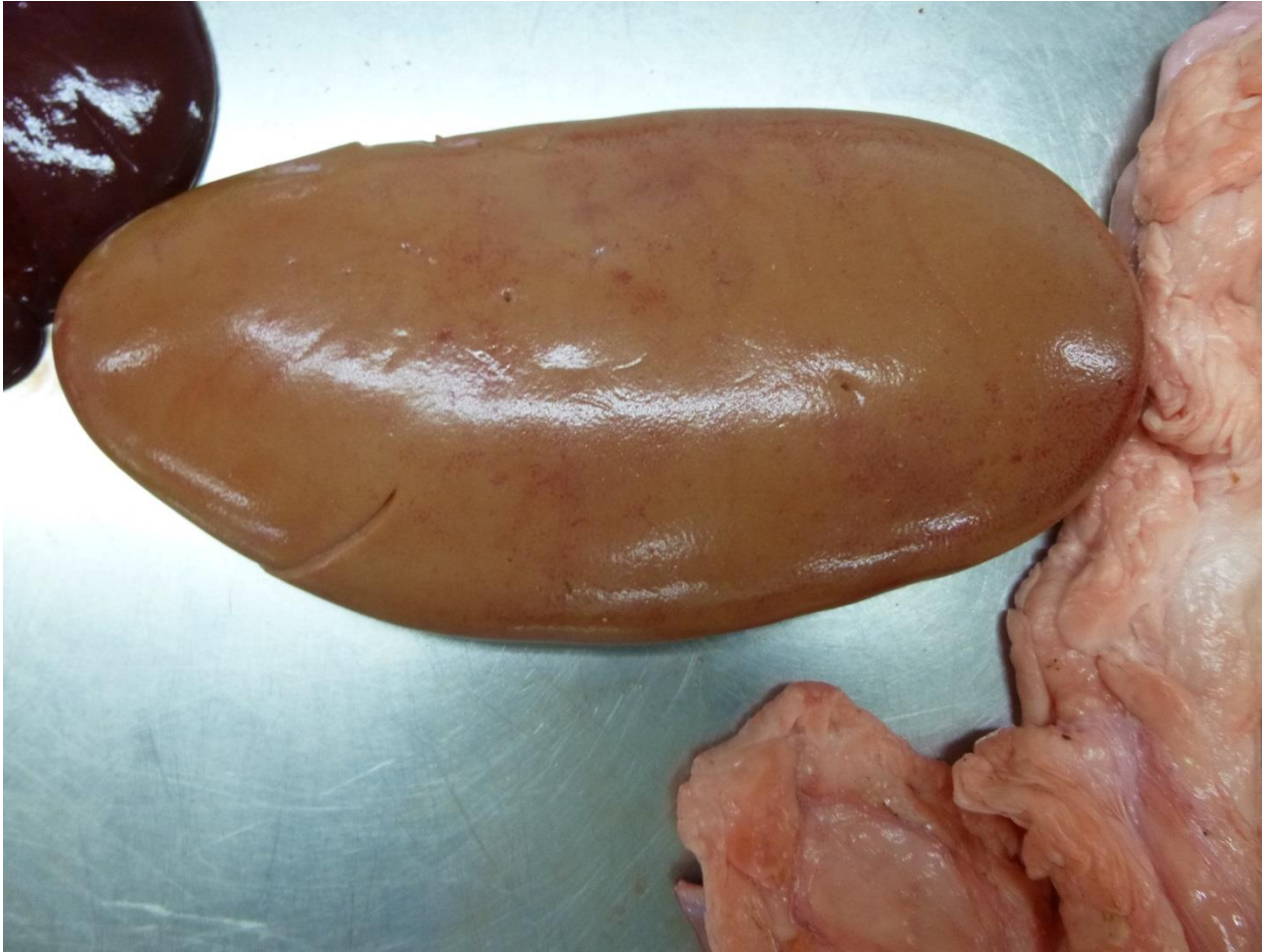
Normal kidney



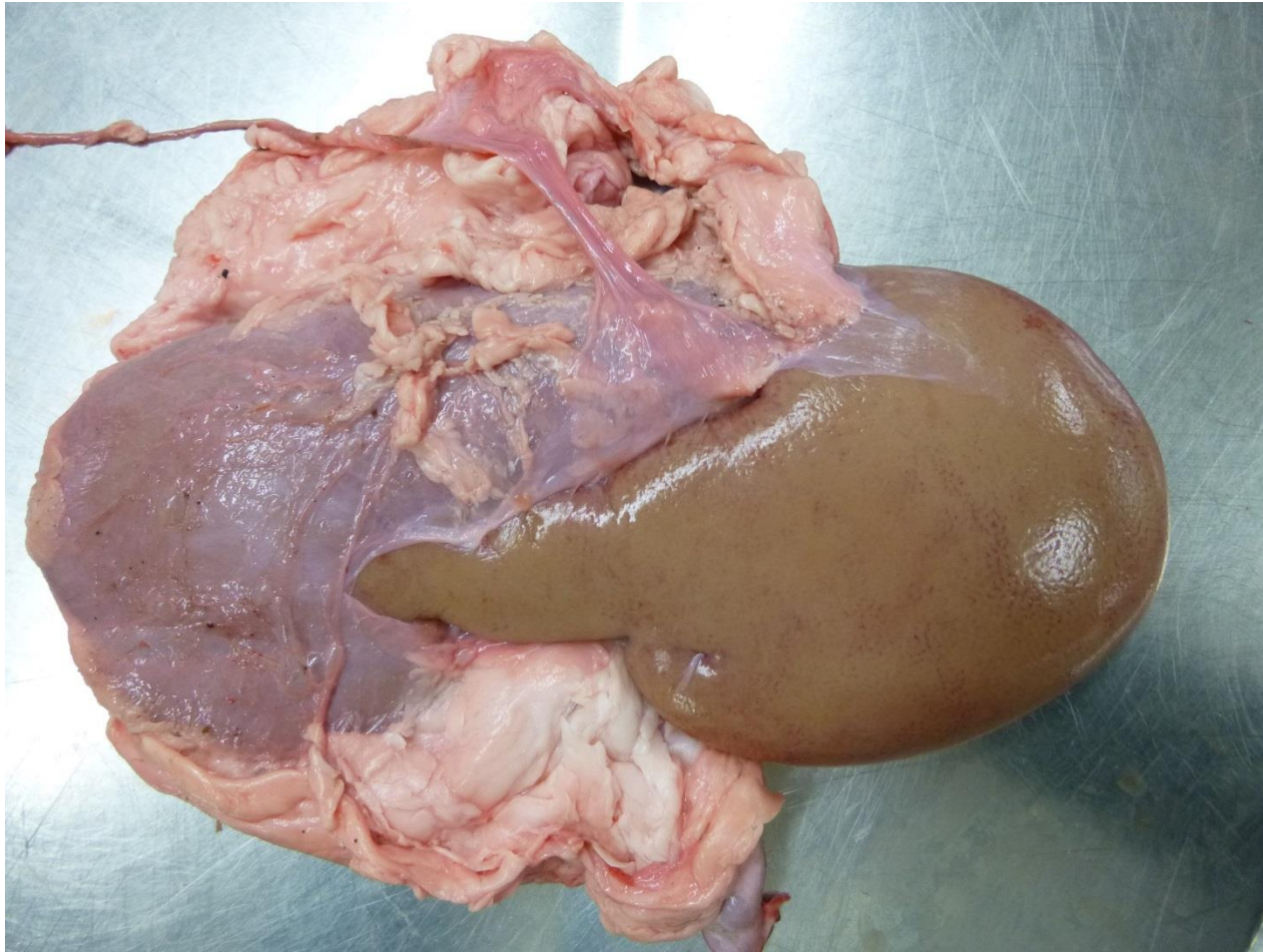
Interstitial nephritis



Interstitial nephritis



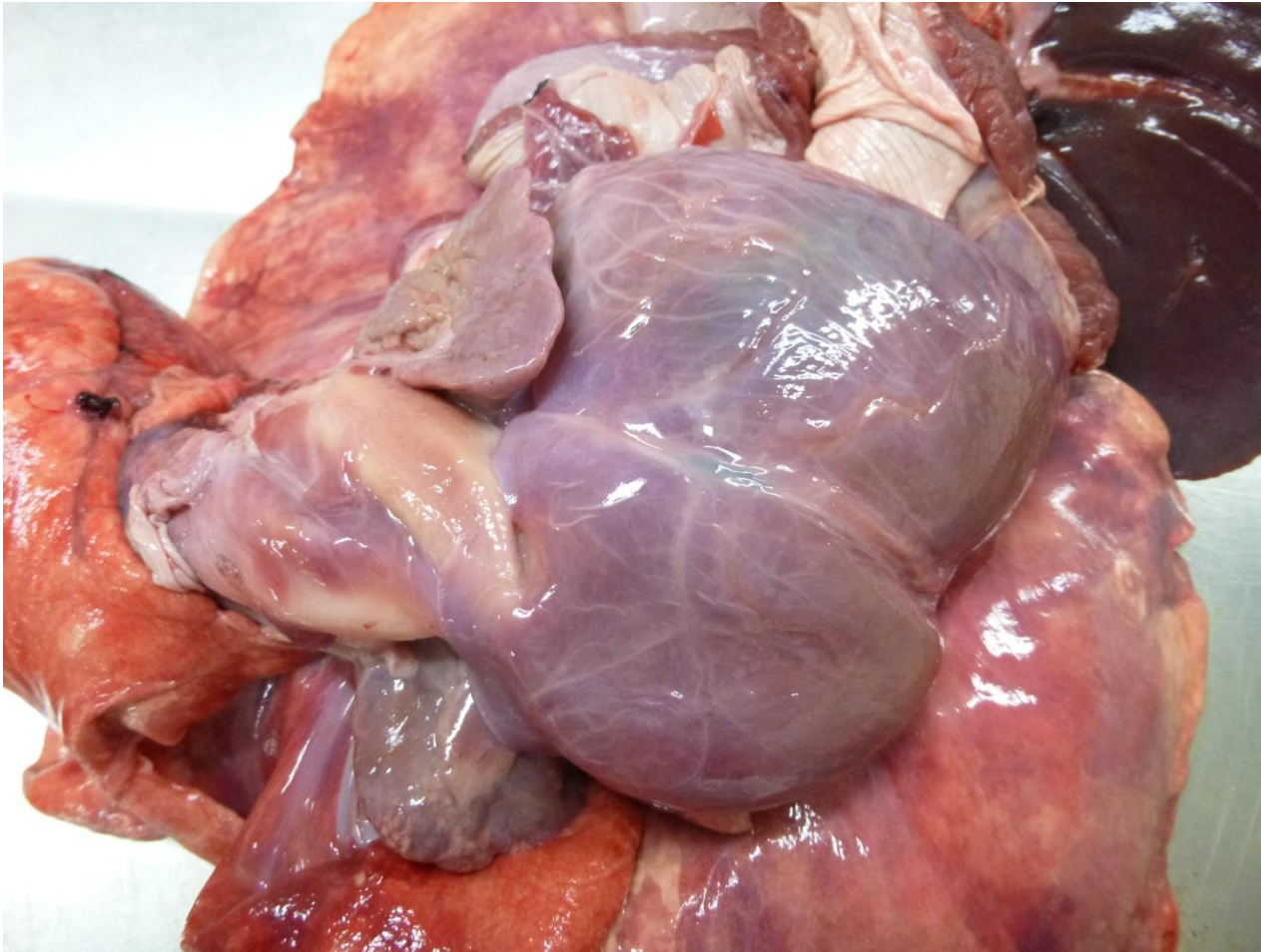
Interstitial nephritis



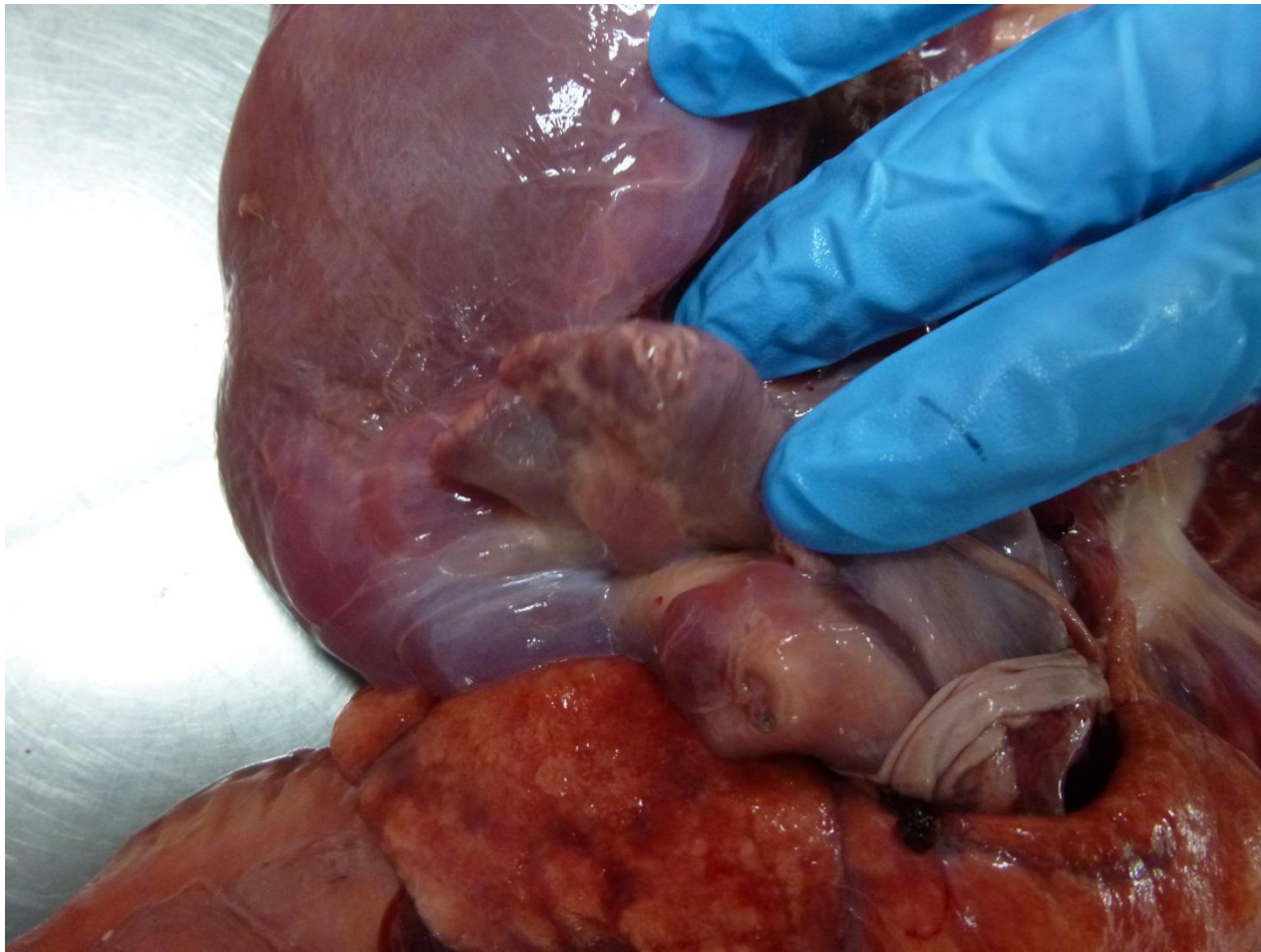
Pericarditis



Emaciated heart



Emaciated



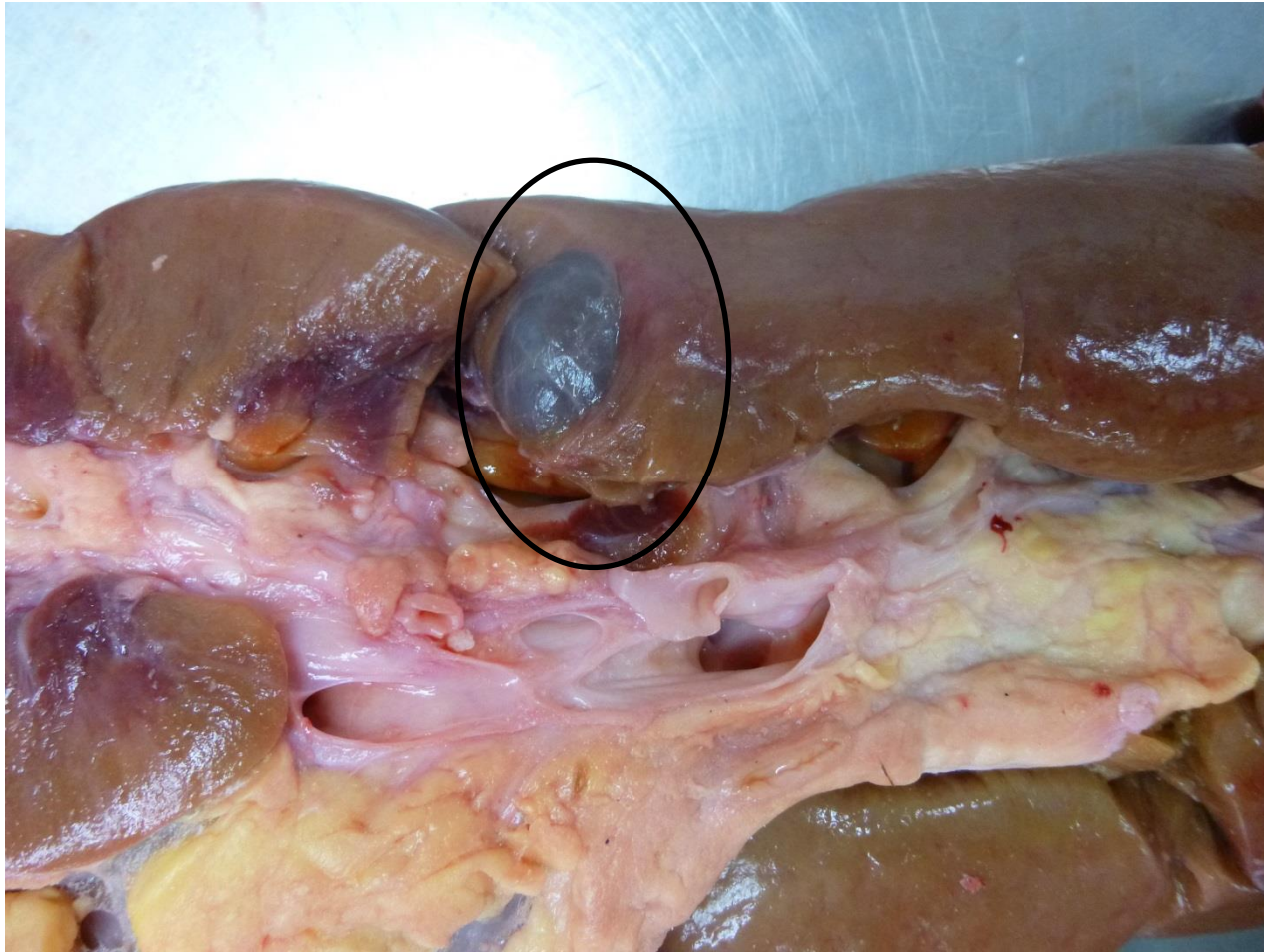
Jaagsiekte



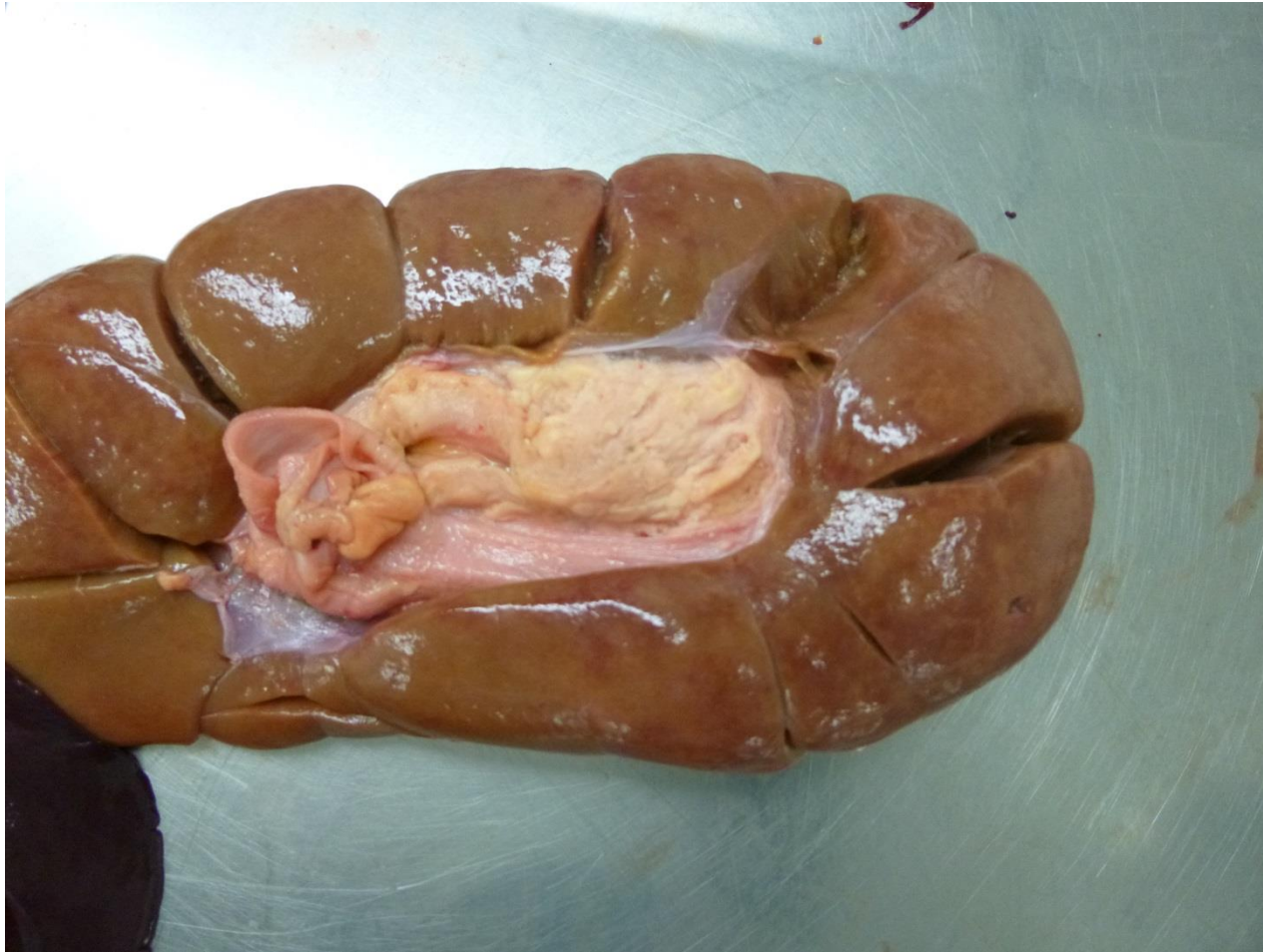
Bovine nephritis



Bovine congenital cyst



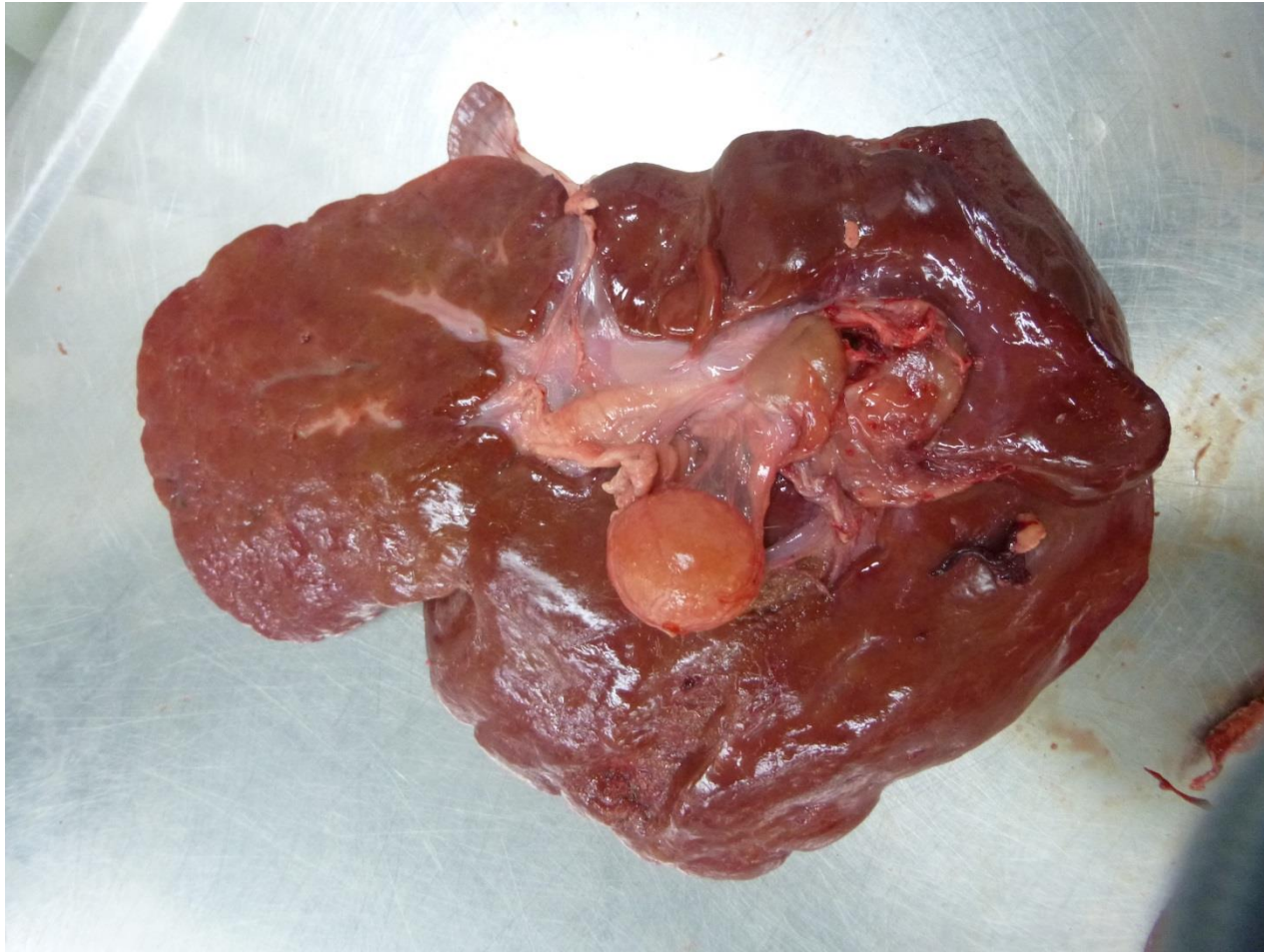
Nephritis bovine kidney cat 3



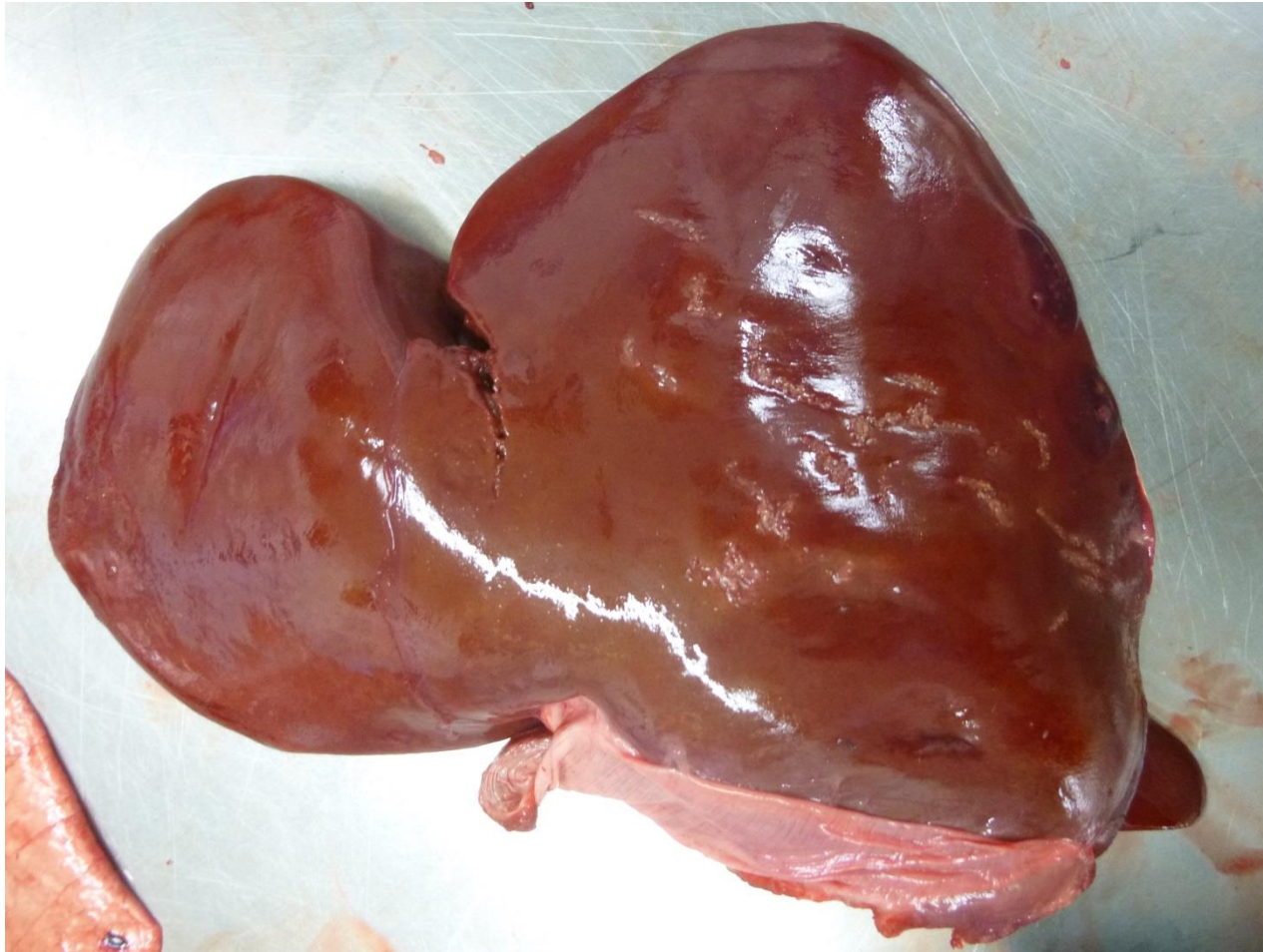
Cysticercus tenuicollis



Cysticercus tenuicollis sheep liver



Cysticercus tenuicollis sheep



Septic abscess.



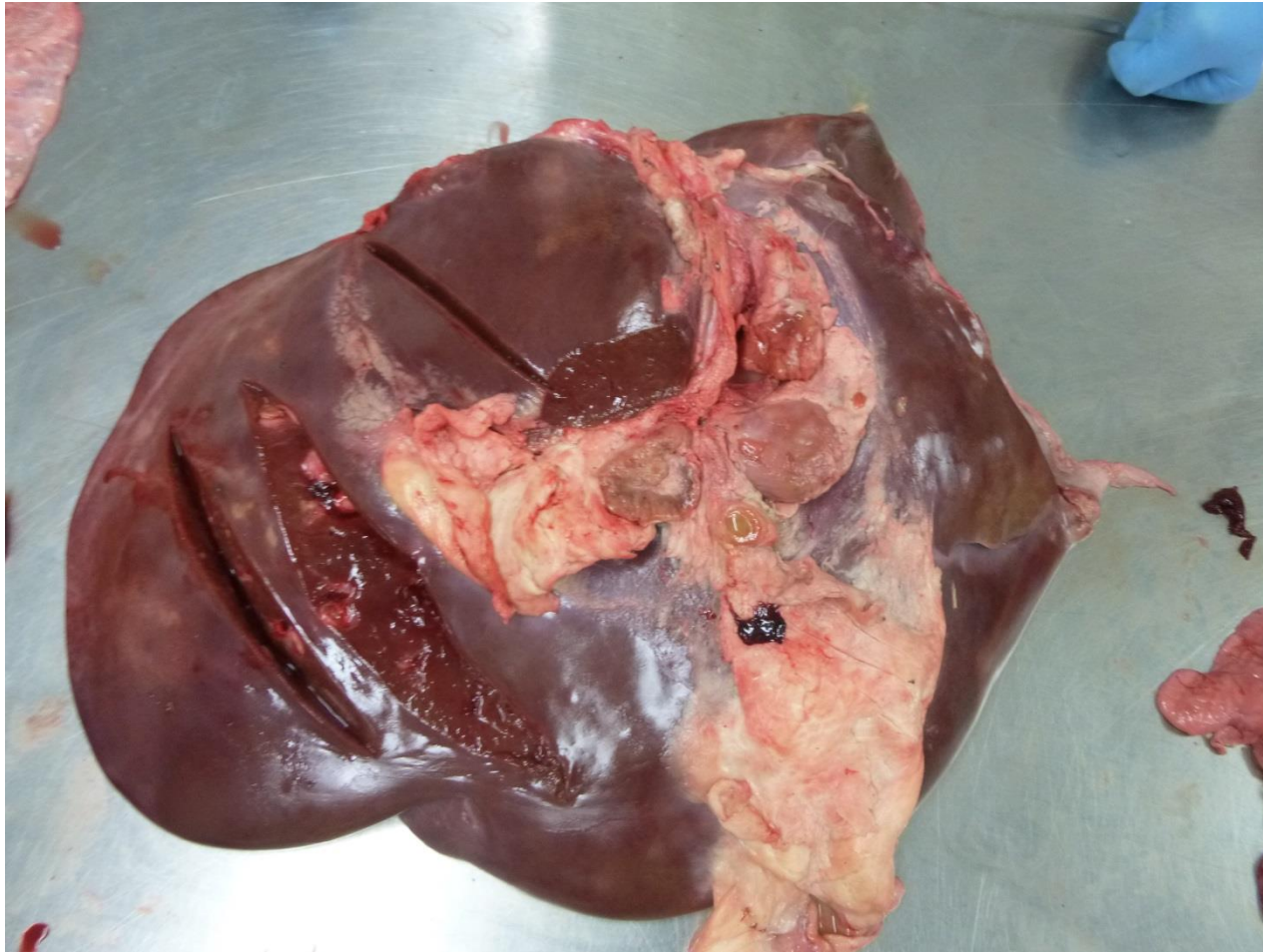
Emphysema



Septic abscess



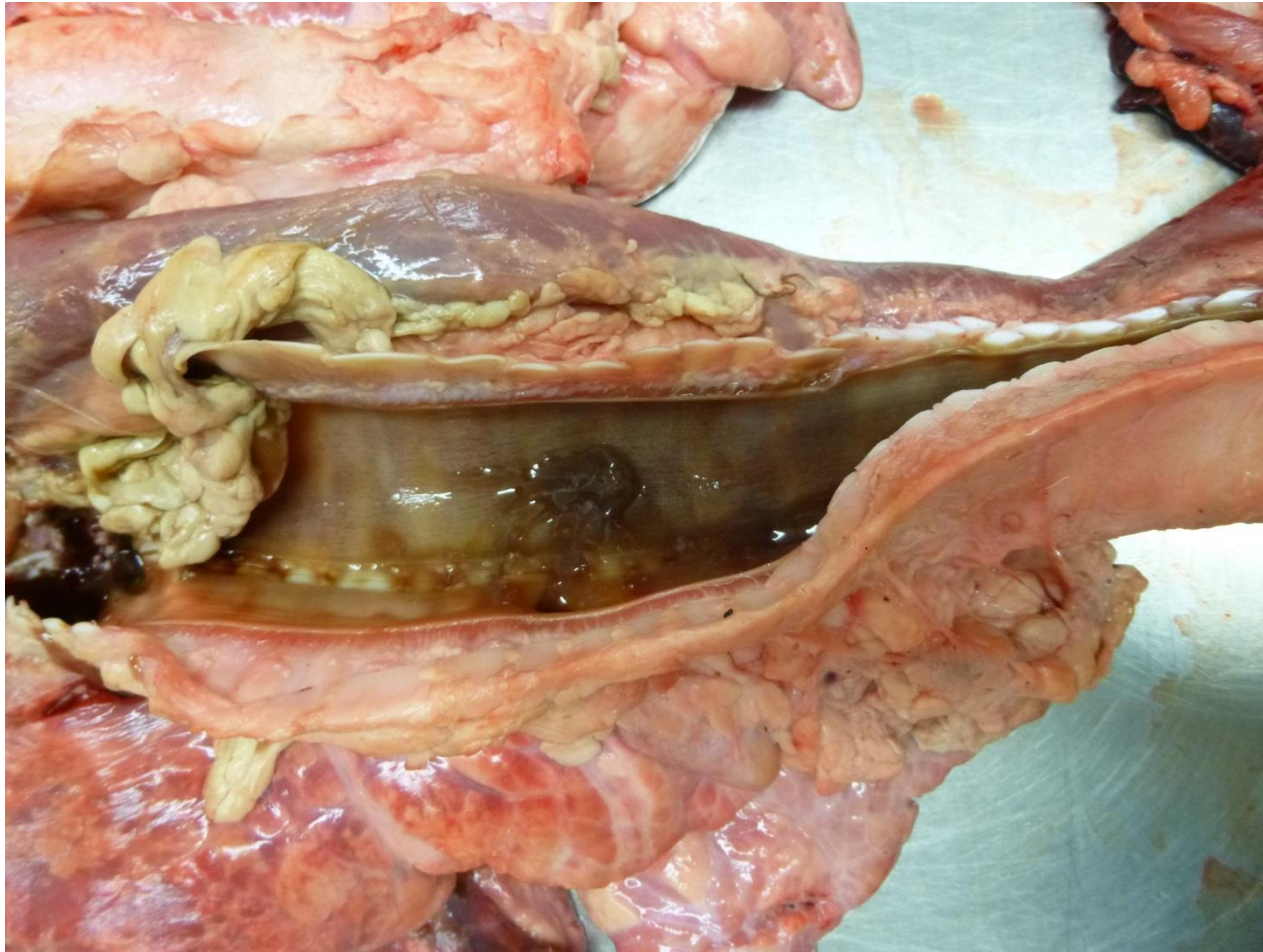
Septic abscess



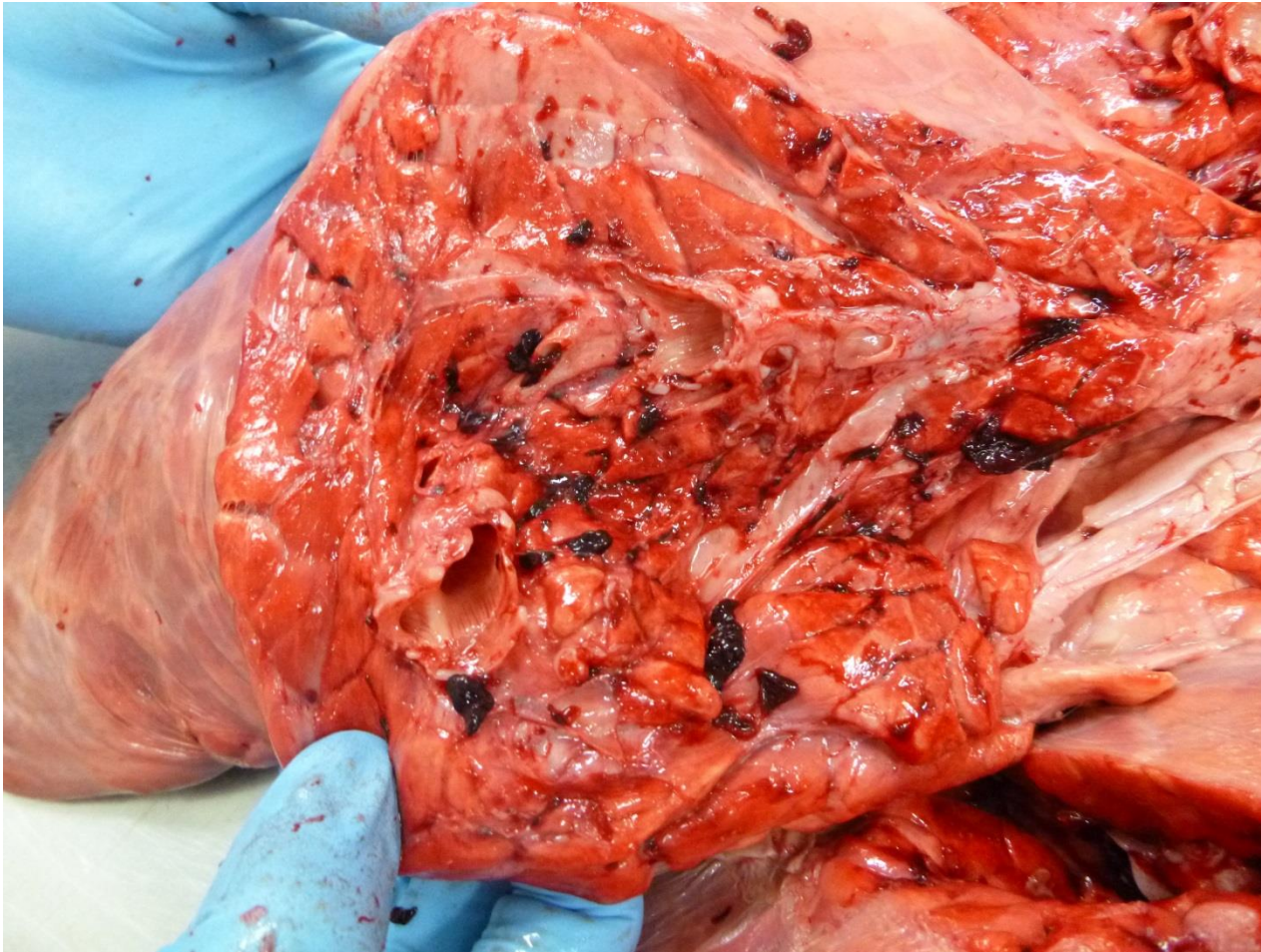
Pasteurella



Pasteurella



Blood inhalation



Blood inhalation

